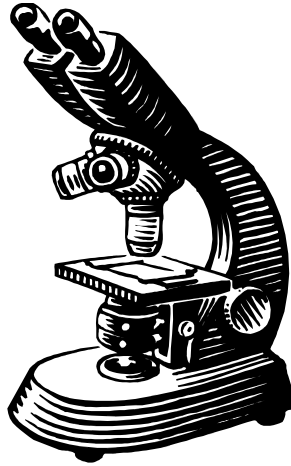


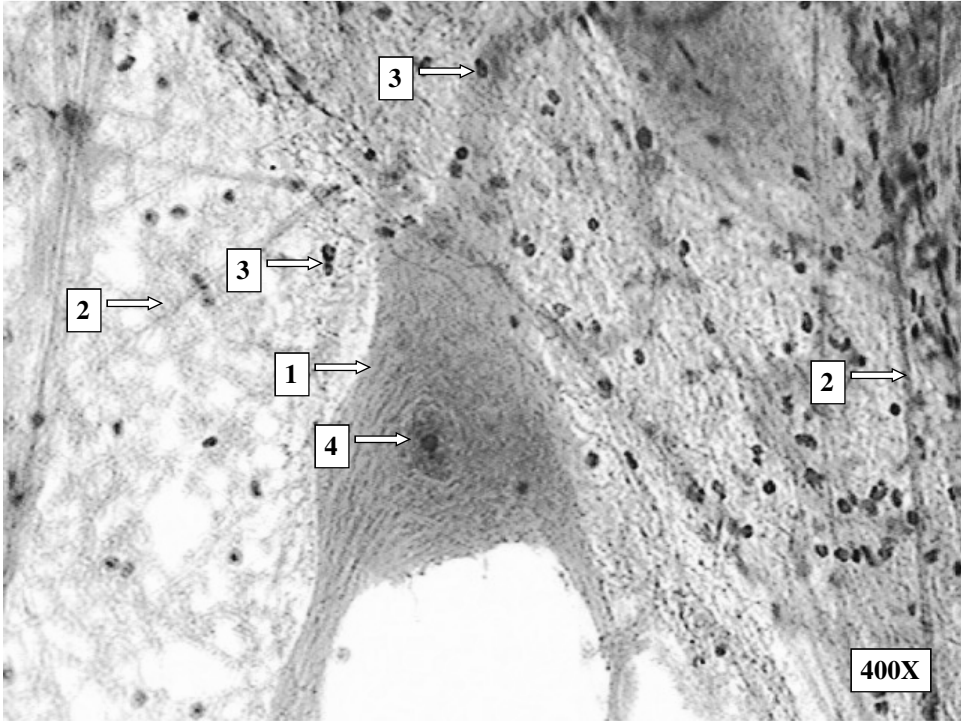
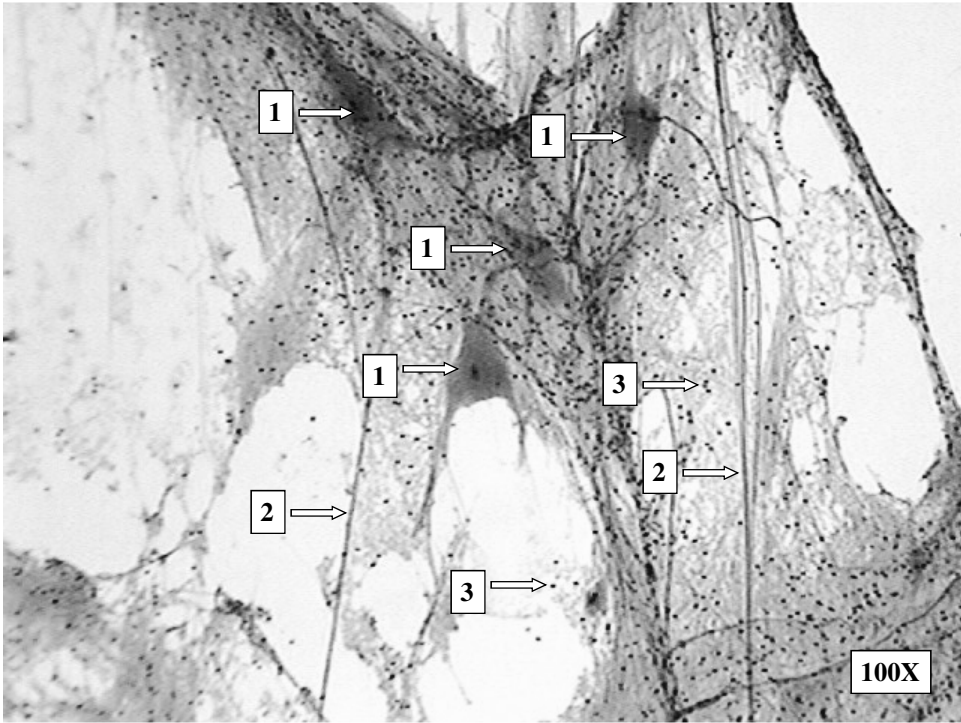
Bio& 241 A&P 1

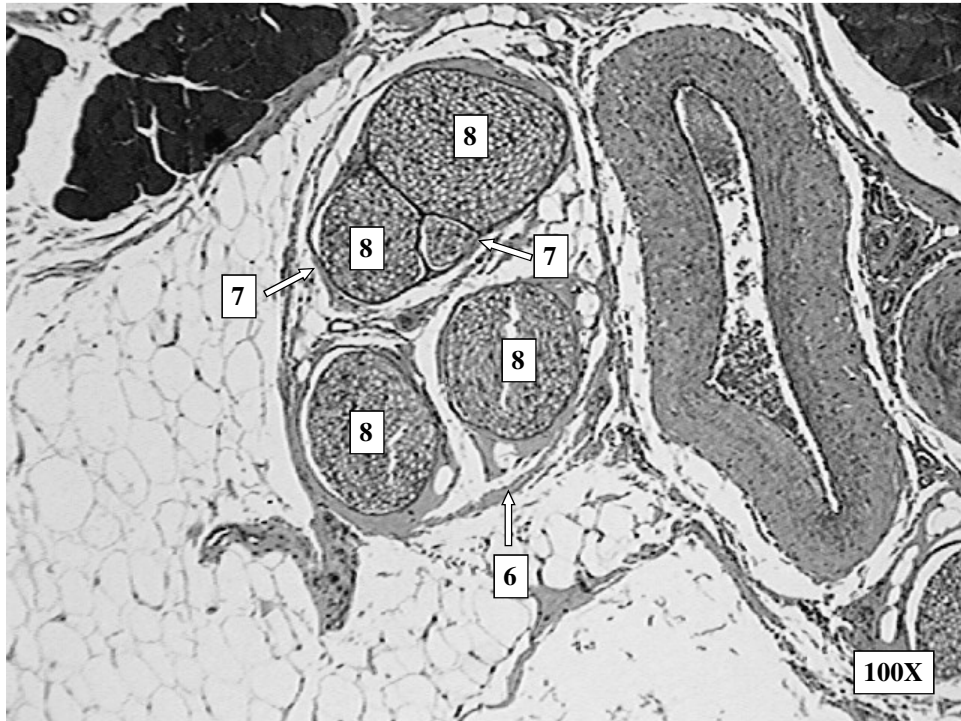
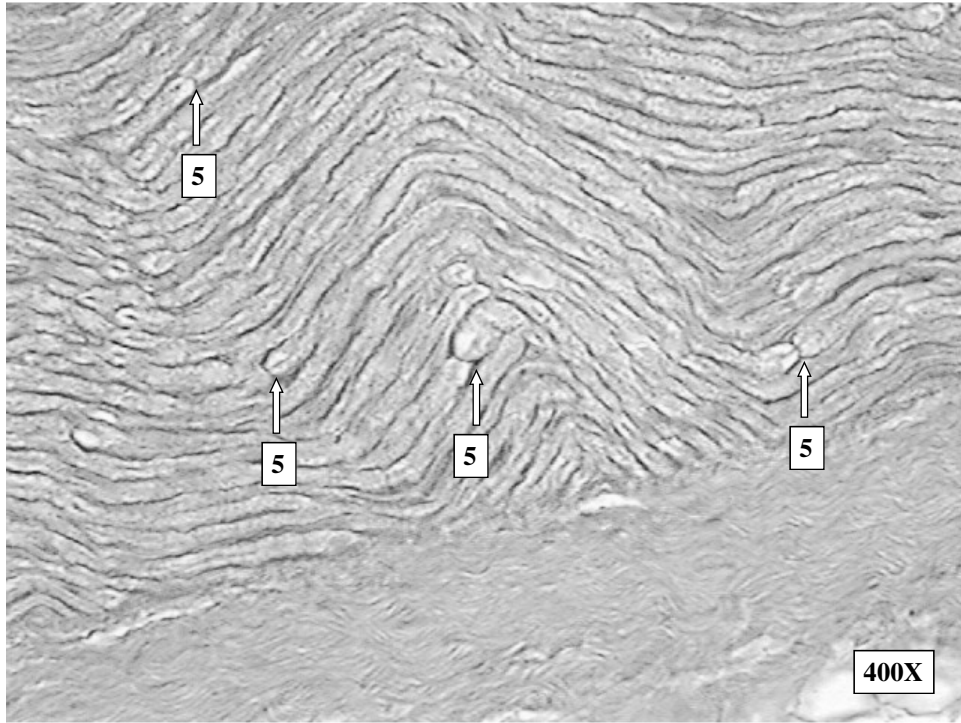
Unit 4 / Lab 1

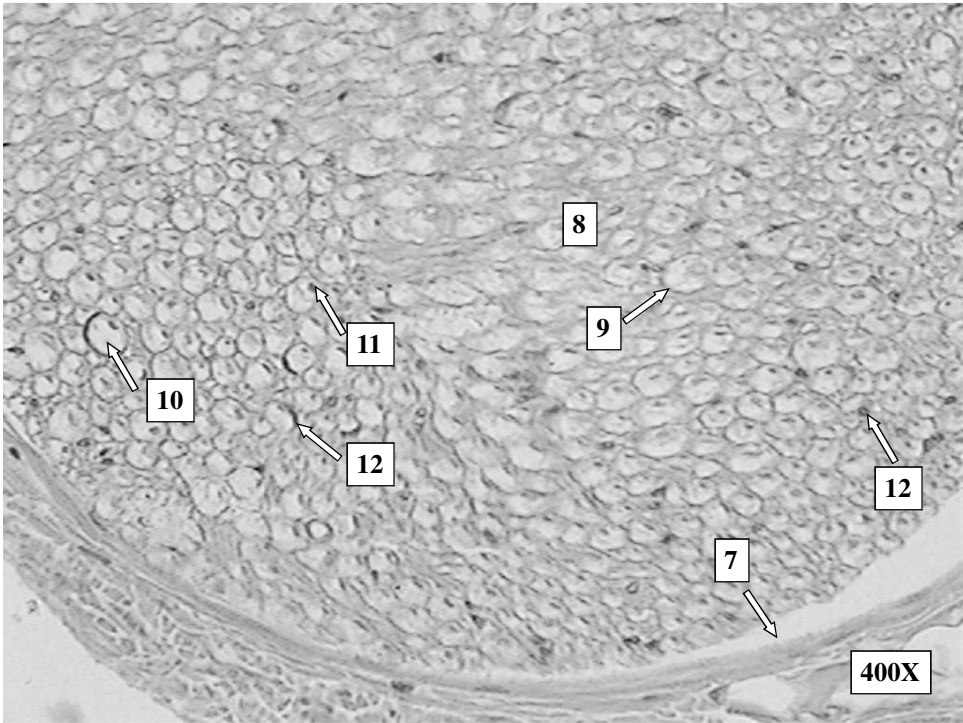
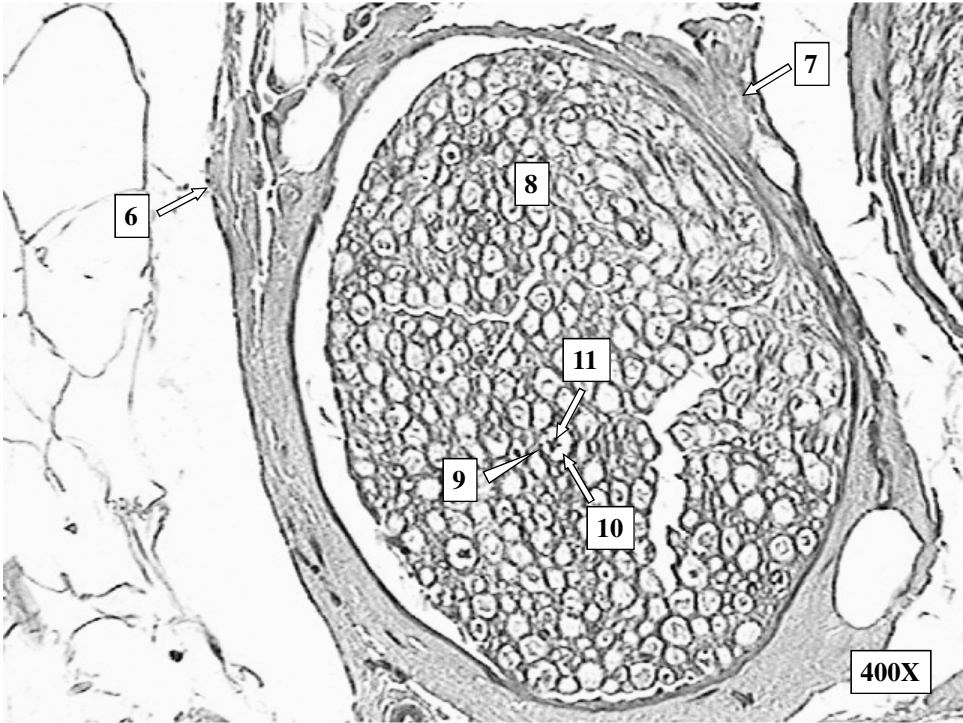


Histology Slides for Nervous Tissues

- **Slides are presented in order of magnification if different view are presented.**
- **As you view the following slides make sure you can accomplish these goals:**
 - 1. Can you identify the tissue observable on the slides?**
 - 2. Can you identify the specific structures or layers indicates by the numbered arrows or brackets?**
- **At the end of a sequence you will find the answers to the above for each slide.**







Answers to Slides 2 through 7

Slide 2: Smear of gray matter low power.

Slide 3: Smear of gray matter high power.

Slide 4: Longitudinal view of myelinated nerve fibers.

Slide 5: X-section of a nerve low power (Masson stain)

Slide 6: X-section of a nerve high power (Masson stain)

Slide 7: X-section of a nerve high power (H&E stain)

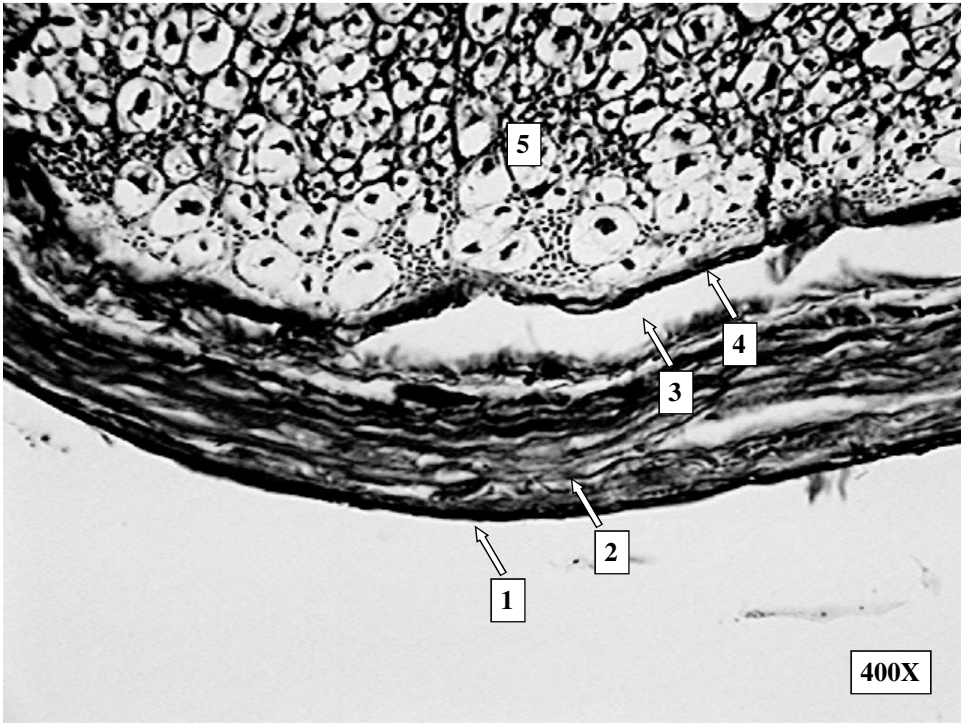
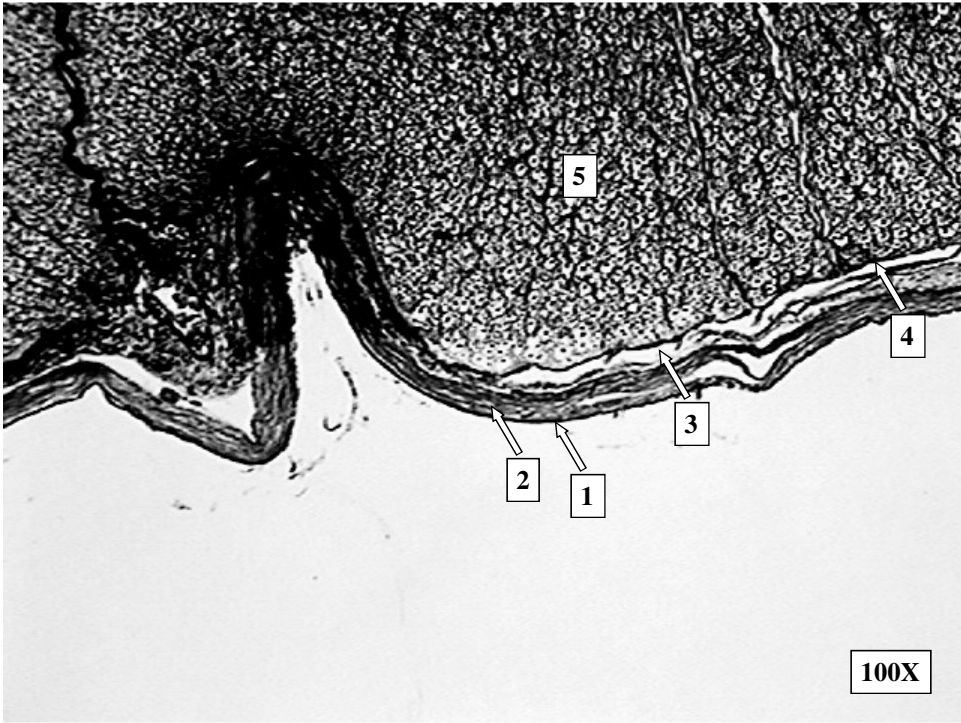
Answers to the numbers:

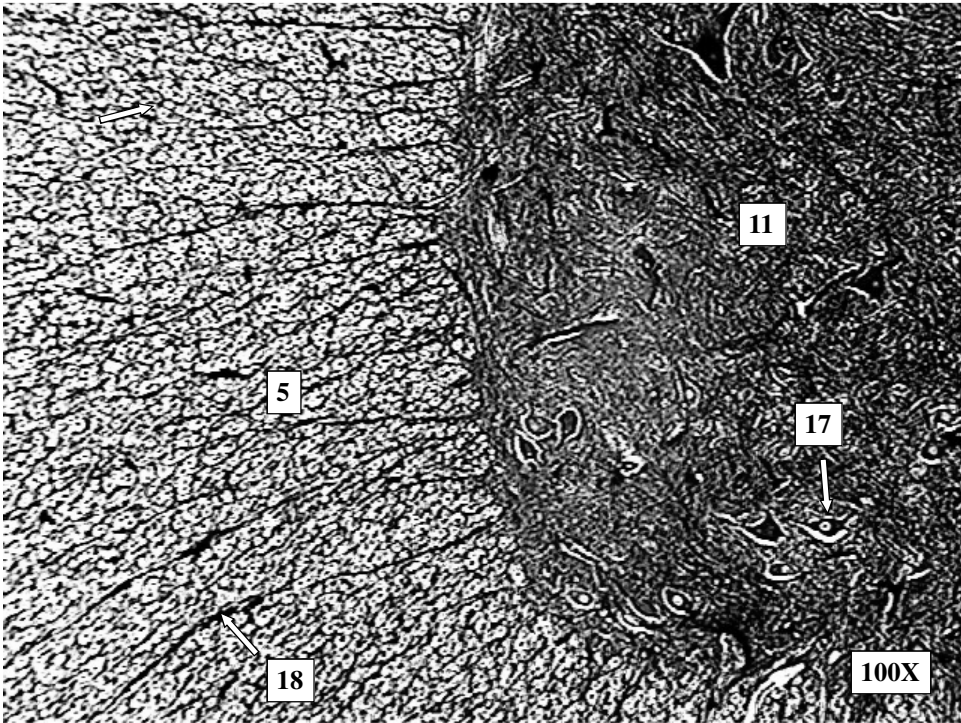
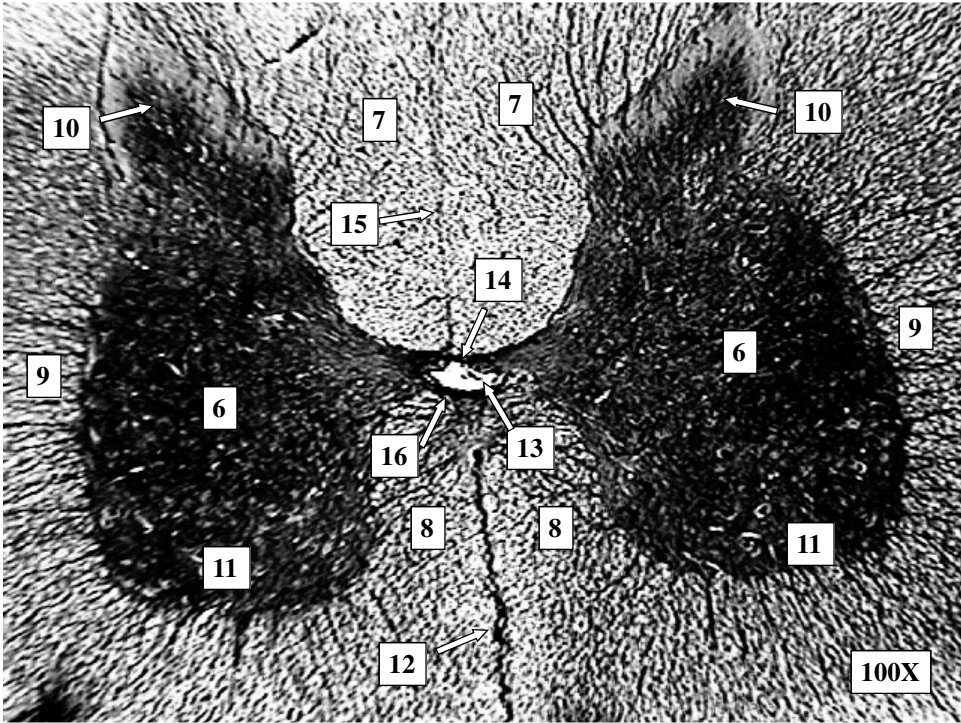
- **Multipolar neuron cell body with nissl bodies, nucleus, and nucleolus.**
- **Nerve fibers (axons of dendrites)**
- **Neuroglial nuclei**
- **Nucleus and nucleolus**
- **Node of Ranvier**
- **Epineurium**

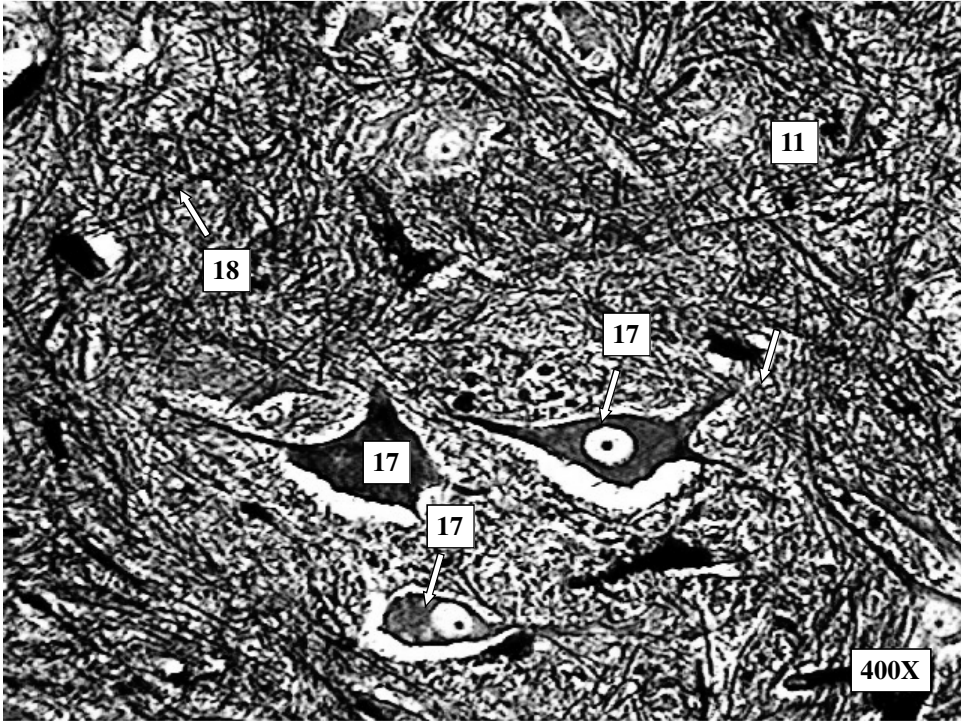
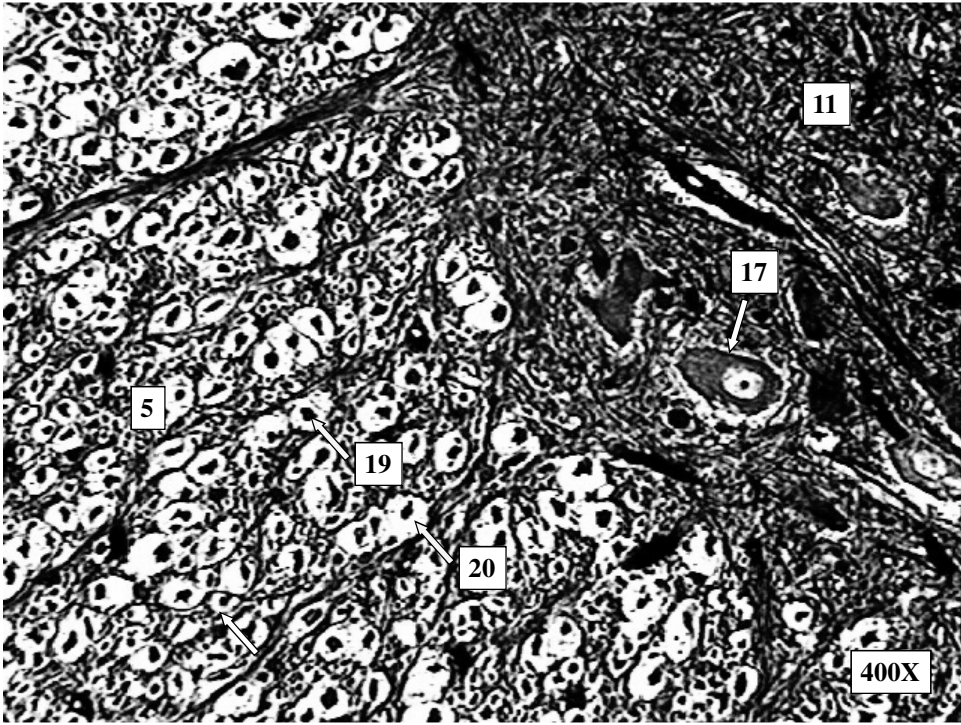
Answers to Slides 2 through 7

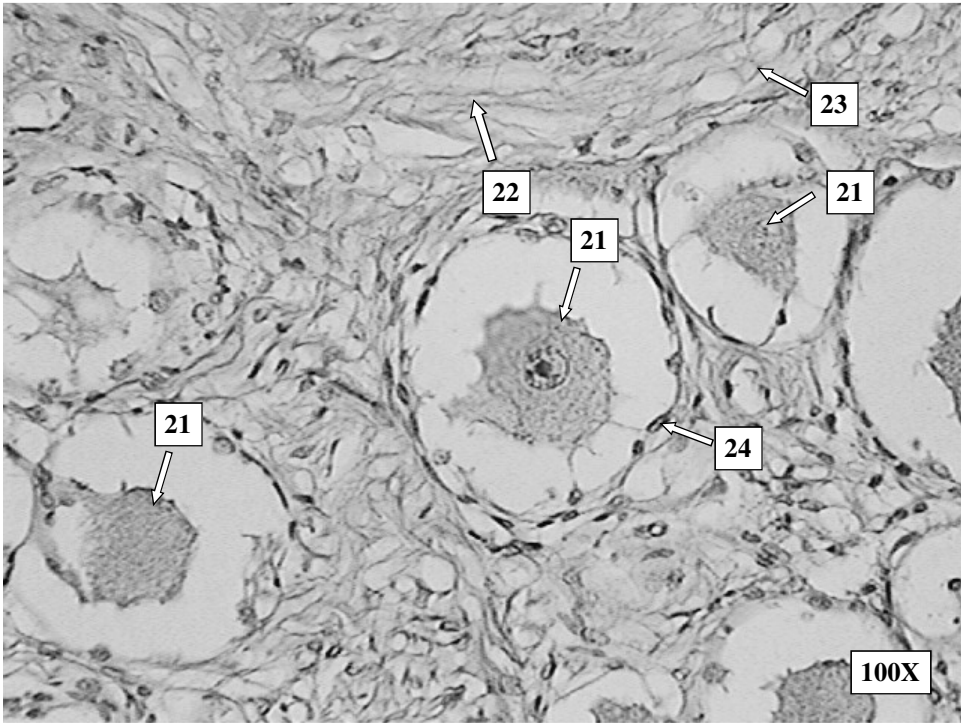
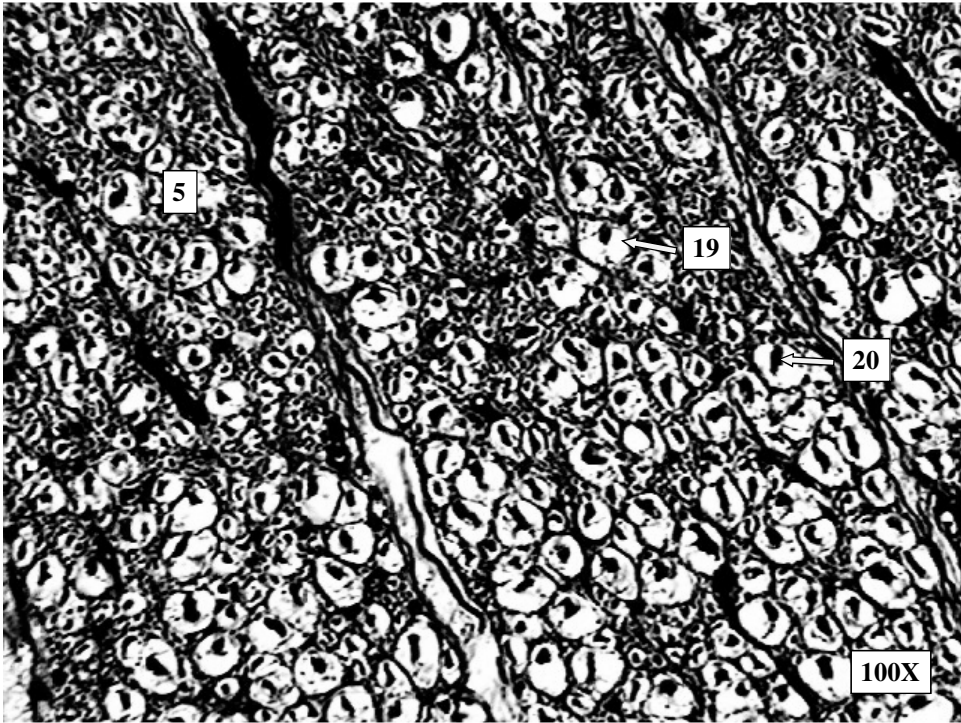
Answers to the numbers:

- 7. Perineurium**
- 8. Nerve fascicle**
- 9. Endoneurium**
- 10. Myelin sheath**
- 11. Nerve fiber**
- 12. Nucleus of Schwann cells**









Answers to Slides 10 through 17

Slide 10 - 16: X-section of spinal cord

Slide 17: Section through Dorsal Root Ganglion

Answers to the numbers:

- **Dura mater.**
- **Arachnoid mater.**
- **Subarachnoid space.**
- **Pia mater.**
- **X-section through white matter.**
- **Gray matter**
- **Posterior or dorsal white column**
- **Anterior or ventral white column**
- **Lateral white column**
- **Dorsal gray horn**
- **Ventral gray horn**

Answers to Slides 10 through 17

Answers to the numbers:

- 12. Anterior or ventral median fissure**
- 13. Central canal**
- 14. Posterior gray commissure**
- 15. Posterior or dorsal median sulcus**
- 16. Anterior gray commissure**
- 17. Multipolar neuron cell body**
- 18. Transverse nerve fibers**
- 19. X-section through a nerve fiber**
- 20. Myelin sheath created by Oligodendrocytes**
- 21. Sensory neuron cell bodies**
- 22. Longitudinal view of myelinated nerve fibers**
- 23. Nodes of Ranvier**
- 24. Satellite cells**